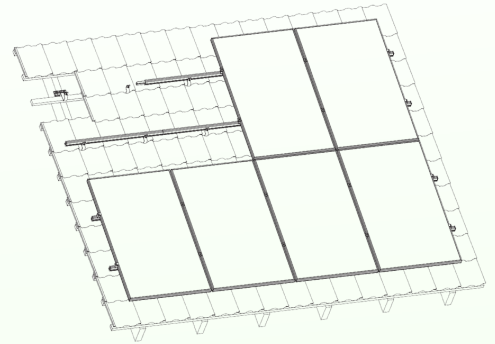


SYSTEM DATASHEET

VS+



GENERAL

System	On-roof PV-mounting system for pitched roofs
Content	Attachement roof-substructure (wood, steel, concrete), fastening elements, mounting rails, PV-module clamps
System warranty	10 years
Application Area	Pitched roof on commercial, industrial, agricultural and residential buildings
Roof covering	Tile, slate, sheet metal (trapezoidal/corrugated), sandwich, fibre-cement
Roof pitch	min. 10°, max. 45°

SYSTEM PROPERTIES

Module tilt	Roof parallel
Material	Aluminum, stainless steel, coated steel

MODULE COMPATIBILITY

Type	PV-Module with frame height from 30 to 50mm
Dimensions	Length: unlimited, Width: unlimited
Orientation	Horizontal/Landscape und vertical/Portrait

CERTIFICATIONS

TÜV	ID000048970 according to 2PfG
MCS012	IK0197/03, IK0197/04, IK0197/05
Building authority approval	Roof hook Aluminum (Z-14-4-515) Fastening material (Solar fasteners, Hanger bolts, wood screws)

SERVICES

PV Layout/Design	Provided by Renusol
------------------	---------------------